

# YAMAHA ACCESSORIES

## YZF-R1

## YZF-R1M



02.02.2018

### YZF-R1/R1M AKRAPOVIC SLIP-ON MUFFLER TITANIUM

90798-33301

CHF 1'190.–



**Make your YZF-R1/R1M Racer look and sound even cooler!**

- Made of high quality, titanium muffler body with carbon heat shield
- Features exclusively laser engraved AKRAPOVIC / R1 logo
- Sophisticated powerful MOTO-GP style muffler body enhances the looks of your Yamaha
- Creates an exciting sound
- Awesome tail end design for high performance product
- Fully street legal – EC approved EU3 compliance

**This is a non Yamaha branded product and is fully developed and produced by Akrapovic.**

### YZF-R1/R1M AKRAPOVIC LINK PIPE

90798-33310-00

CHF 995.–



**Replaces an original part which contains the catalytic converter.**

- For combination with the optional R1 Slip-on Muffler Titanium
- For circuit use only!

**Note:**

**When the part with the catalytic converter is removed, the slip-on muffler system becomes non street legal.**



**YZF-R1 / YZF-R1M****YZF-R1/R1M AKRAPOVIC COMPLETE EVO LINE EXHAUST SYS.**

90798-33311-00

CHF 3'450.-

**YZF-R1/R1M AKRAPOVIC COMPLETE RACING LINE EXHAUST SYS.**

90798-33311-10

CHF 2'650.-

**Make your YZF-R1/R1M Racer look , sound and performance even cooler!**

- Made of high quality, titanium muffler body with carbon silencer body with carbon heat shield
- Features exclusively laser engraved AKRAPOVIC / R1 logo
- Sophisticated powerful MOTO-GP style muffler body enhances the looks of your Yamaha
- Creates an exciting sound
- Awesome tail end design for high performance product
- **NOT street legal –**

**This is a non Yamaha branded product and is fully developed and produced by Akrapovic.**





### YZF-R1/R1M ENDURANCE SCREEN

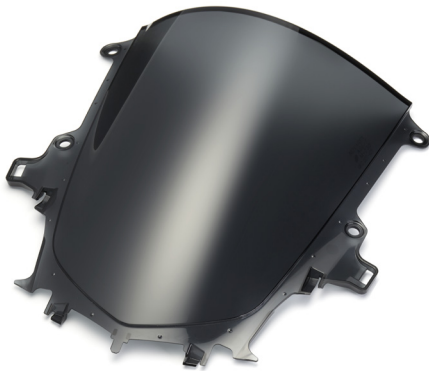
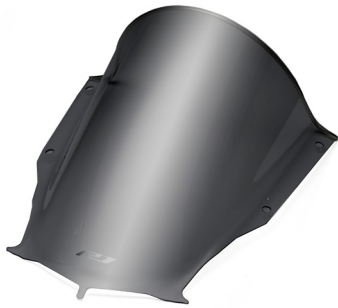
2CR-F83J0-00  
2CR-F83J0-10

**ENDURANCE SCREEN - CLEAR**  
**ENDURANCE SCREEN - SMOKE**

CHF 155.–

**Excellent design and superior wind protection of Endurance screen for long distance high speed riding**

- Provides comfortable wind protection for rider especially for long distance high speed riding
- PC hard coated material
- Available clear and smoke colour screen
- Designed especially for the YZF-R1
- Easy fitting by replacing STD screen
- R1 Logo silk print
- TUV/KAB approval compliance



### YZF-R1/R1M SPRINT SCREEN SMOKE

2CR-261C0-00

CHF 175.–

**Stylish dark smoke screen make your R1 more sporty looks**

- Dark smoke screen replacing of STD clear screen
- PC injection material
- Same shape and dimension as STD screen
- Easy fitting
- WVTA approval compliance



### YZF-R1/R1M CRASH SLIDER

2CR-211D0-00

CHF 285.–

**Protectors placed on either side of the YZF-R1 to prevent accidental damage to the engine, cowling panels**

- High quality and durable high pressure aluminium die-cast protectors
- New and excellent design for making your R1 attractive
- High quality natural colour anodized product
- No influence on the banking angle of the unit
- Light weight protection system
- Easy installation on engine mounts of frame bracket



## YZF-R1 / YZF-R1M

---

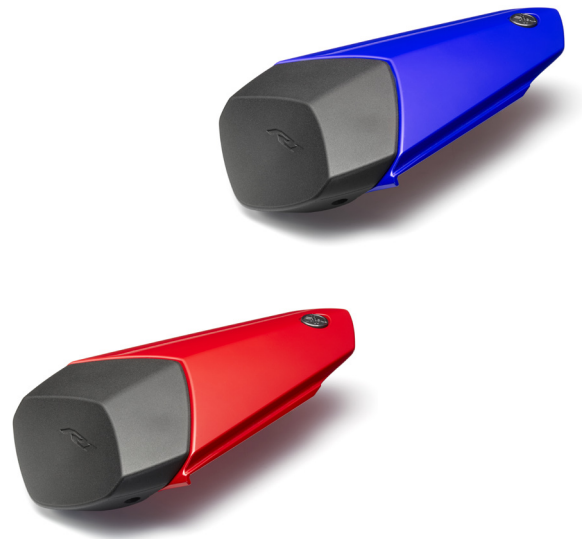
### YZF-R1/R1M REAR SEAT COVER

2CR-247F0-00      **SINGLE SEAT COVER – DPBMC**  
 2CR-247F0-10      **SINGLE SEAT COVER – VRC1**

CHF 298.–

**Racing type stylish single seat cover for providing your YZF-R1 more racing looks.**

- Perfect matching design for R1 makes more racing looks
- ABS injected body and PE injected seat base
- R1 logo engraved in support pad
- Yamaha tuning emblem on the body
- Easy replacing with STD passenger seat
- Body colour coordinated seat cover colours, available DPBMC and VRC1



### YZF-R1/R1M RACING COVER KIT LPH+RVM

2CR-FRCVK-00

CHF 98.–

**Stylish racing style light weight aluminium billet brined covers makes your YZF-R1/R1M more racer looks**

- High quality anodized aluminium component.
- Matt black colour.
- To be used for license plate holder and rear view mirror mounts
- Featured R1 logo on the LPH mount cover.
- Featured Gilles logo on the rear view mirror.
- Easy install
- By Gilles



### YZF-R1/R1M RACING COVER KIT P. FOOT

2CR-FRCVK-10

CHF 65.–

**Stylish racing style light weight aluminium billet brined covers makes your YZF-R1/R1M more racer looks.**

- High quality anodized aluminium component.
- Matt black colour.
- To be used for passenger foot rest bracket mounts
- Featured R1 logo on the body.
- Easy install
- By Gilles







YZF-R1 / YZF-R1M





### YZF-R1/R1M ENGINE OIL FILLER CAP AL. BILLET

2CR-FEGFC-00

CHF 79.-



**Custom oil filler cap - replacing the original - for an extra stylish touch to your YZF-R1/R1M**

- Matt black colour aluminium anodized machine milled parts.
- Two accent colour rings matching for your R1 body colour
- Safety locking wire holes provided
- Featured Gilles logo.
- By Gilles

### YZF-R1/R1M L.CRANK CASE PROTECTOR

2CR-FCRCP-00

CHF 175.-



**High-tech racing style light weight aluminium billet crank case protector makes your YZF-R1/R1M more racer looks.**

- Protects your crank case cover from crash or accidental damages.
- High quality bronze colour anodized aluminium component.
- Replaceable POM protection slider part.
- Featured R1 logo on the slider body.
- By Gilles

### YZF-R1/R1M R. CRANK CASE PROTECTOR

2CR-FRCCP-10

CHF 149.-



**High-tech racing style light weight aluminium billet crank case protector makes your YZF-R1/R1M more racer looks.**

- Protects your crank case cover from crash or accidental damages.
- High quality bronze colour anodized aluminium component.
- Replaceable POM protection slider part.
- Featured R1 logo on the slider body.
- By Gilles

## YZF-R1 / YZF-R1M

### YZF-R1/R1M CHAIN AJUSTER AL. BILLET

2CR-FCHAD-J0  
2CR-FCHAD-J1

CHAIN ADJUST. BLUE  
CHAIN ADJUST. BRONZE

CHF 145.–

**High-tech racing style light weight aluminium billet chain adjuster makes your YZF-R1/R1M more racer looks.**

- High quality anodized aluminium component.
- Available blue and bronze colour.
- Enable precision drive chain adjustment
- Featured Gilles logo on the adjuster body.
- By Gilles



### YZF-R1/R1M REAR RACING STAND

2CR-FRRST-00

CHF 179.–

**High-quality MOTO-GP type rear racing stand. Provides stable parking condition for your YZF-R1/R1M more racer looks.**

- MOTO-GP type racing stand.
- High quality matt black special coated steel tube frame.
- Stable and smooth standing – on and off operation by four wheels system.
- POM hook holders for light setting operation
- Featured blue anodized R1 logo on the stand body.



### YZF-R1/R1M REAR STAND HOOKS

2CR-F71A0-00

CHF 125.–

**Billet aluminium MOTO-GP type rear stand hooks.**

- High quality billet aluminium rear stand hooks
- MOTO-GP type functional design
- Matt Black billet anodized aluminium body
- Chain guide mount is provided in left stay
- YAMAHA logo on both stays
- Recommended to use with optional REAR RACING STAND R1 / 2CR-FRRST-00





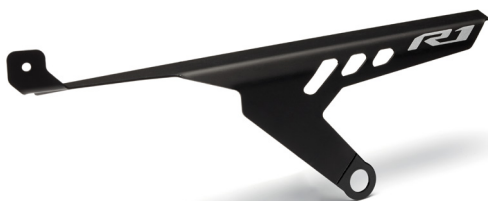
### YZF-R1/R1M LICENSE PLATE HOLDER

2CR-FLPH0-00

CHF 159.–

#### Stylish license plate holder to replace the original

- Adds more style to your bike
- Features R1 logo
- Supports the standard flashers and the optional black, chrome or carbon-look LED flashers
- Includes LED license plate light
- Includes bracket for original reflector
- Material: Black anodized aluminium
- Certified conformity (CE/TÜV/WVTA): CE (for license plate light)



### YZF-R1/R1M CHAIN GUARD

2CR-FCHNC-00

CHF 89.–

#### Exclusively designed chain guard to replace the standard plastic chain guard

- For extra style, matching the YZF-R1
- High quality Aluminium component, Matt black colour powder coated
- Features R1 logo





## YZF-R1 / YZF-R1M

### YZF-R1/R1M REARSET TITANIUM/BLUE

2CR-FRSET-00  
2CR-FRSET-10

REARSET BLUE  
REARSET TITANIUM

CHF 895.-

**Billet aluminium Rearset provides your YZF-R1/R1M perfect matching with your riding position, adjustable lightweight, and high-strength replacement for the standard foot pegs.**

- Foot pegs, rear brake pedal and gear shift pedal positions are fully adjustable
- Provides best foot pegs position by combination of sliding and rotary adjuster
- Adjustable range is 5 position in sliding and 4 position in rotary
- High quality matt black colour anodized aluminum components with blue or titanium accent parts
- Adjustable brake pedal position and width
- Adjustable shift pedal position
- Provides reversed shift pedal operation by switching shift rod mounting position
- No free play thanks to bearing journals during light and extra smooth operation of rear brake and gear shift pedal
- Dedicated and excellent design by Gilles enforces the YZF-R1/R1M more serious racing looks
- Features R1 and Gilles /  $\mu 2$  logos
- TUV/KBA approval compliance





**YZF-R1/R1M RIDER FOOT PEG – SET BLUE**

2CR-FRPEG-00

CHF 119.–



**YZF-R1/R1M PASSENGER FOOT PEG – SET BLUE**

2CR-FPPEG-00

CHF 119.–

**Billet aluminium Rider and Passenger foot peg provides your YZF-R1/R1M more confident foot grips/operation, high-strength replacement for the standard foot pegs.**

- Easy installation
- By Gilles
- High quality Matt black colour anodized components with blue accent ring
- Gilles logo
- Sold per set of two
- TUV/KBA approval compliance



**YZF-R1/R1M CLUTCH LEVER AL. BILLET**

2CR-FCLLV-00

**CLUTCH LEVER AL. BILLET - BLUE**

2CR-FCLLV-10

**CLUTCH LEVER AL. BILLET - BRONZE**

CHF 279.–

**Racing featured High quality finished clutch lever replacing the original ones.**



- Fully adjustable to rider's hand size and position
- Functional racing style foldable clutch lever
- Matt black anodized lever body, available of blue or bronze accent colour parts
- Adjusts easily into 3 positions thanks to the quick turning knob
- Unique offset clutch cable mounting center setting option for changing operation force in 3 positions
- Provides perfect clutch lever control
- By Gilles.Tooling
- TUV/KBA approval compliance

## YZF-R1 / YZF-R1M

### YZF-R1/R1M F. BRAKE LEVER AL. BILLET

2CR-FFBRL-00 F. BRAKE LEVER AL. BILLET – BLUE  
 2CR-FFBRL-10 F. BRAKE LEVER AL. BILLET – BRONZE

CHF 279.–

**Racing featured High quality finished front brake lever and clutch lever replacing the original ones.**

- Fully adjustable to rider's hand size and position
- Functional racing style foldable brake lever
- Matt black anodized lever body available of blue or bronze accent colour parts
- Adjusts easily into 5 positions thanks to the quick turning knob
- Provides perfect front brake lever and clutch lever control
- For more racing style riding, optional REMOTE CONTROL KIT – F. BRAKE LEVER 2CR-FRMCT-00 is available
- By Gilles.Tooling
- TUV/KBA approval compliance



### YZF-R1/R1M REMOTE CONTROL KIT F. BRAKE LEVER

2CR-FRMCT-00

CHF 165.–

**Racing featured Remote control kit for front brake lever – can be added to optional F. brake lever . Enable rider to adjust front brake lever with left hand for fade while riding - for an extra function to your YZF-R1/R1M**

- Matt black colour aluminium anodized parts.
- Adding in the optional front brake lever 2CR-FBRL-00 / 2CR-FBRL-10
- Featured Gilles logo.
- By Gilles
- TUV/KBA approval compliance





**YZF-R1/R1M CLUTCH LEVER GUARD - BLACK**

2CR-FCLLV-P0

CHF 169.–


**Safety guard for clutch lever, enhance the racing feature design of the YZF-R1/R1M**

- High quality Matt black anodized aluminium body with black nylon protector
- Replaceable POM protector part
- Perfect matching with both STD and the optional front brake levers 2CR-FBRL-00 / 2CR-FBRL-10
- High quality matt black anodized aluminium parts
- Featured R1 logo
- By Gilles
- Sold as kit including fixation parts

**YZF-R1/R1M F. BRAKE LEVER GUARD - BLACK**

2CR-FFBRP-00

CHF 169.–


**Safety guard for front brake lever, enhance the racing feature design of the YZF-R1/R1M**

- High quality Matt black anodized aluminium body with black nylon protector
- Replaceable POM protector part
- Perfect matching with both STD and the optional clutch levers 2CR-FCLLV-00 / 2CR-FCLLV-10
- High quality matt black anodized aluminium parts
- Featured R1 logo
- By Gilles
- Sold as kit including fixation parts

**YZF-R1/R1M REAR VIEW MIRROR EXTENSION**

2CR-FRVME-X0

CHF 109.–


**Kit enable to extend the rear view mirror position wider than STD YZF-R1. Approx. 45mm wider on each side than STD makes better visibility on rear view mirror.**

- Better visibility that STD rear view mirror position + 45mm wider on each side.
- CNC machined POM base body
- Easy installing with STD rear view mirrors

## YZF-R1 / YZF-R1M

---

### YZF-R1/R1M F. AXLE PROTECTOR

2CR-FFAXP-00

CHF 109.–

**High-tech racing style light weight aluminium billet front axle protector makes your YZF-R1/R1M more racer looks.**

- Protects your front wheel axle and front form bottom from crash or accidental damages.
- Racing featured functional design.
- High quality matt black colour anodized aluminium component.
- POM protection plug in the counter end of axle
- Blue and bronze accent colour rings are included
- Featured Gilles logo on the center cap.
- By Gilles



---

### YZF-R1/R1M R. AXLE PROTECTOR

2CR-FRAXP-00

CHF 109.–

**High-tech racing style light weight aluminium billet rear axle protector makes your YZF-R1/R1M more racer looks.**

- Protects your rear wheel axle and rear arm from crash or accidental damages.
- Racing featured functional design.
- High quality matt black colour anodized aluminium component.
- POM protection plug in the counter end of axle.
- Blue and bronze accent colour plates are included
- Featured Gilles logo on the center cap.
- By Gilles



### YZF-R1/R1M SIDE STAND EXTENSION

2CR-FSTEX-00

CHF 89.-



**Kit that enables to extend the base of the original YZF-R1/R1M side stand.**

- Provides extra support surface for stable parking
- High quality matt black anodized aluminium body
- Features the R1 logo on the stainless cover plate
- High quality finish enhances the looks of your YZF-R1/R1M

### YZF-R1/R1M ADAPTOR TANK BAG RING

2CR-FTBRG-00

CHF 49.-



**Kit that enables you to mount the Tank Bag Sport to your YZF-R1/R1M for extra luggage capacity.**

- Package includes the tank bag mount ring to fix/remove the tank bag with ease from your bike
- To be mounted on fuel filler cap mount base.
- Note: Tank bag City and Tour are too large to fit for YZF-R1/R1M.

### TANK BAG-SPORT

YME-FTBAG-SP-00

CHF 119.-



**Functional and sturdy-looking tank bag with innovative quick-lock system; handy when you require extra luggage capacity.**

- Tank bag quick-lock system allows quick and easy mounting/removal; especially handy when unit has to be refueled
- Requires tank bag mount ring - separately available - for fitment on the tank
- Volume: 5L - expandable to 9L
- Map holder and extra side pockets for small items such as your wallet and mobile phone
- Features the Yamaha logo
- Includes hand carry grip at the front
- Includes rain cover as well



## YZF-R1 / YZF-R1M

---

### TANK BAG - TOUR

YME-FTBAG-TR-01

CHF 198.-

**Similar like above with key difference;**

- Volume: 16L - expandable to 22L

**Note:**

**Requires tank bag mount ring or tank bag adaptor kit - both separately available - for fitment on the tank**



---

### REAR-SEAT BAG

YME-REARB-AG-00

CHF 209.-

**Functional and sturdy-looking rear seat bag with handy and easy buckle fitting system; handy when you require extra luggage capacity on rear seat.**

- Handy large capacity rear seat bag : 24L ~ expandable to 36L
- Can fit on most of motorcycles rear seat by very simple buckle system, easy fit –easy removable
- Handy side compartments for small things storage
- Backpack straps is included
- Features the Yamaha logo
- Includes hand carry grip at the front
- Includes rain cover as well



---

### 12V DC KIT

1WS-F254B-00-00

CHF 45.-

**Outlet suitable to charge your electronic equipment such as mobile phone or MP3 player.**

- Genuine Yamaha plug matches the pre-wiring of your YZF-R1/R1M
- Maximum load: 1 Amp
- Compatible with the optional available USB adaptor



**LED BLINKER SET ARROW BLACK**  
YME-W0789-00-00

**LED BLINKER SET ARROW CHROME**  
YME-W0789-10-00

**LED BLINKER SET ARROW CARBON**  
YME-W0789-20-00

CHF 65.-



**Stylish flashers to replace the standard flashers.**

- Unique design by GK Design specially for Yamaha
- Includes blinker speed regulating resistor
- 9 LEDs per blinker
- 55cm long wire with shrink sleeve
- Sold per set of two
- Available in 3 variations



**YAMAHA TOUCH-UP PAINT FOR MAGNESIUM  
YZF-R1 WHEELS / 12ml.**

YMM-30500-01-00  
CHF 15.-

YZF-R1/M TOUCH-UP PAINT YB  
**YAMAHA BLACK**

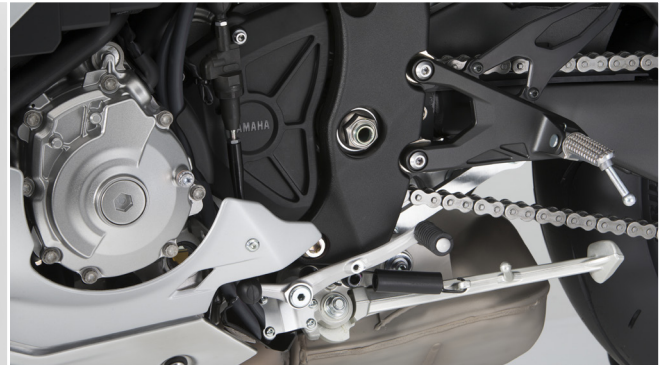
YMM-30500-02-00  
CHF 15.-

YZF-R1/M TOUCH-UP PAINT LGB  
**LOW GLOSS BLACK**

YMM-30500-03-00  
CHF 15.-

YZF-R1/M TOUCH-UP PAINT DPBM15  
**DEEP PURPLISH BLUE METALLIC 15**

YZF-R1 / YZF-R1M





**Die Listenpreise sind Preisempfehlungen des Herstellers/Importeurs.**

Die Preise sind für den Handel unverbindlich. Sie verstehen sich inkl. der gesetzlichen Mehrwertsteuer. Produktänderungen und Liefermöglichkeiten vorbehalten. Irrtümer und Preisänderungen vorbehalten. Vorhergehende Preislisten verlieren ihre Gültigkeit.

***Les prix figurant sur la liste sont les prix recommandés par le fabricant / l'importateur.***

*Les prix ne sont pas obligatoires pour le commerce. Ils s'entendent TVA comprise.*

*Sous réserve de modifications des produits et des capacités de livraison.*

*Sous réserve d'erreurs et de modifications des prix. Les anciennes listes des prix ne sont plus applicables.*

Hostettler AG  
CH - 6210 Sursee  
Tel.: 041 / 926 61 11  
Fax: 041 / 926 63 28  
E-Mail: [info@yamaha-motor.ch](mailto:info@yamaha-motor.ch)

